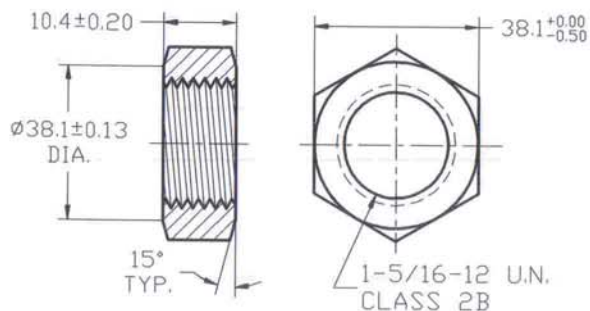
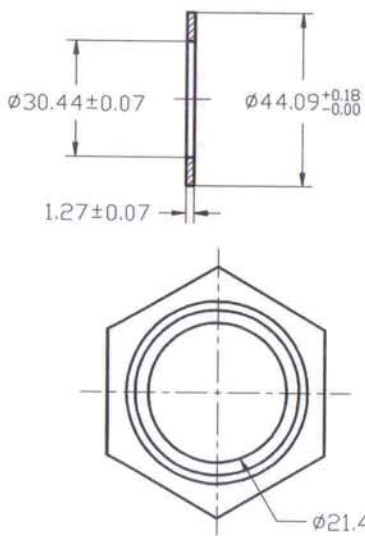


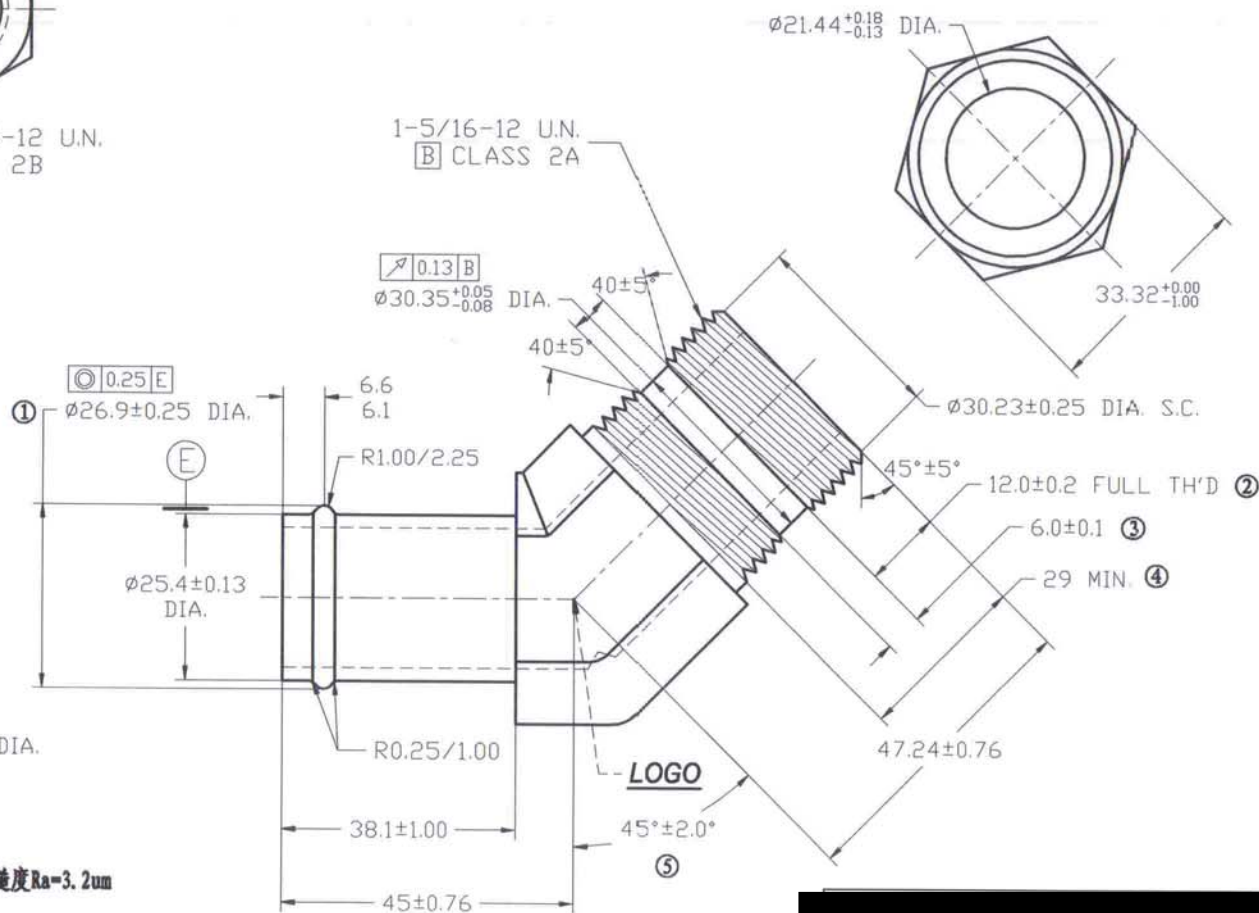
**LOCKNUT (螺母)**



**Washer (垫片)**



REV 更改号	DATE 日期	REVISION DETAILS 更改内容	APPD 审核并批准
①	2015.12.09	Dia 28.09±0.25 changed to 26.9±0.25	
②~③	2015.12.16	公差改变 Tolerance change	



UNLESS SPECIFIED  
ALL DIMENSIONS IN mm  
MACHINED SURFACES Ra=3.2um  
ANGLE TOLERANCES ±1°  
Other tolerance except angles,  
in accordance with  
GB/T1804-2000(ISO2768-1)-m  
and GB/T1184-1996(ISO2768-2)-m

其它事项,  
图示尺寸单位为mm  
未注机加工表面粗糙度Ra=3.2um  
角度公差±1°  
其它未注公差(除角度外)均按:  
GB/T1804-2000(ISO2768-1)-m和  
GB/T1184-1996(ISO2768-2)-m

**MATERIAL** Chinese steel 45

**FINISH** Remove all sharp edges,burrs,slivers and swarf, break all edges 0.127-0.254mm. 去除所有毛刺,铁屑等残留物,锐边倒钝0.127-0.254mm. ZINC PLATING WITH 12um MICRONS MINIMUM PLATING THICKNESS AND TRIVALENT CHROMATE PASSIVATION AND WITHSTAND 96 HRS TO WHITE / 144 HS TO RED RUST IN SALT SPRAY TEST. 镀锌,三价铬钝化,银白色,盐雾试验96小时无白斑,144小时无红锈,镀锌层厚度大于12um.

**PART No**  
零件名 4603-16-16-NWO-FG

**SCALE:** APPD: Zhangjian  
批准  
DRN: Tanghailing  
制图 2015.12.09  
NTS DATE: 16/12/15  
日期  
CHK: Ljunbiao  
审核 2015.12.09